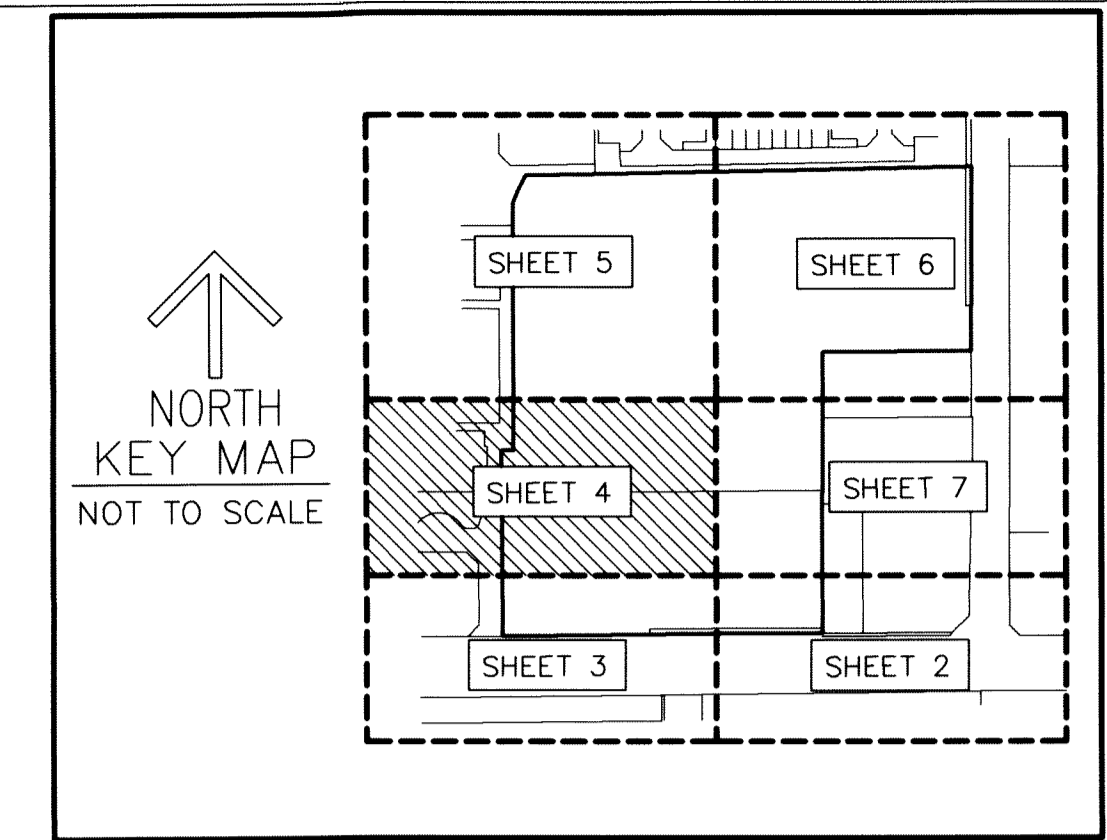


THIS INSTRUMENT PREPARED BY  
 DAVID P. LINDLEY  
 OF  
**CAULFIELD and WHEELER, INC.**  
 SURVEYORS - ENGINEERS - PLANNERS  
 7900 GLADES ROAD, SUITE 100  
 BOCA RATON, FLORIDA 33434 - (561)392-1991

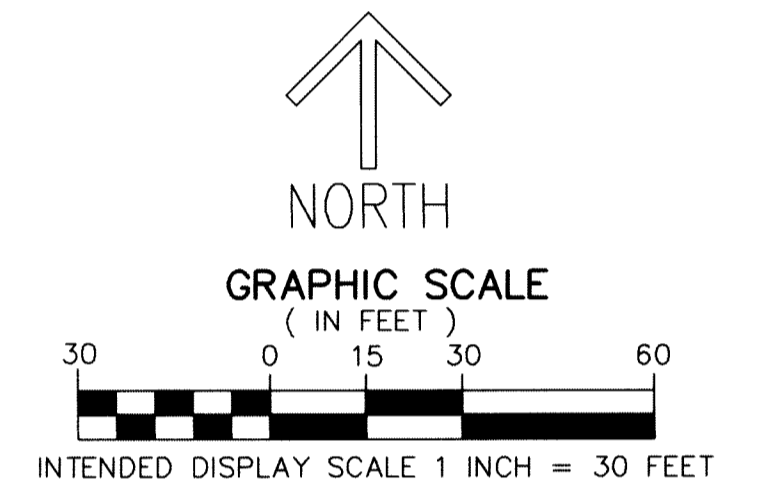
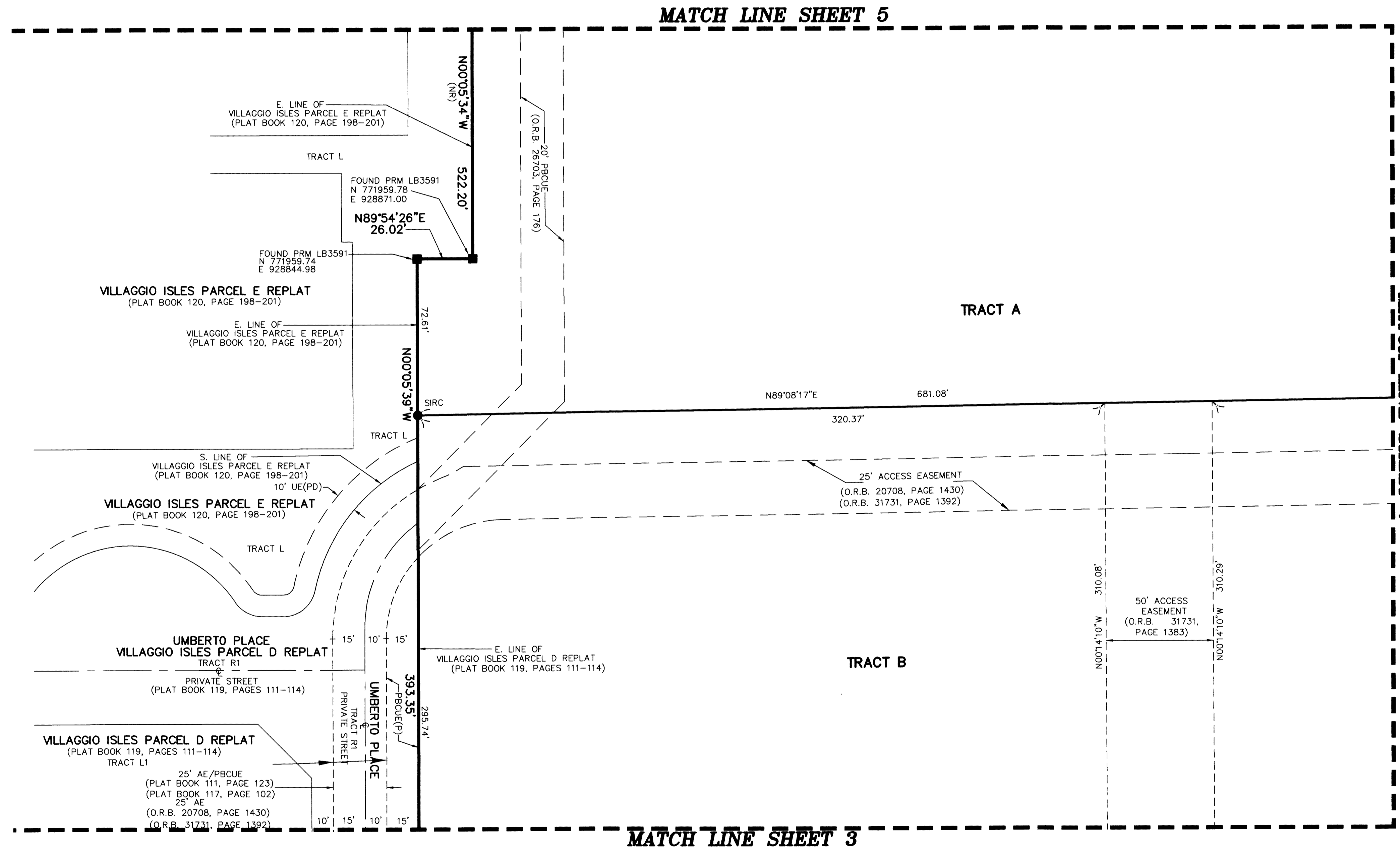
# TERRA NOVA MUPD

BEING A REPLAT OF A PORTION TRACTS 105 THROUGH 107 AND TRACTS 117 THROUGH 119  
 OF THE PLAT OF SUBDIVISION OF S.E. 1/4 AND W. 1/2 OF S.W. 1/4  
 OF SEC. 16 TOWNSHIP 46S RANGE 42E, AS RECORDED PLAT BOOK 1, PAGE 158  
 OF THE PUBLIC RECORDS OF PALM BEACH COUNTY, FLORIDA  
 LYING IN SECTION 16, TOWNSHIP 46 SOUTH, RANGE 42 EAST, PALM BEACH COUNTY, FLORIDA



31

SHEET 4 OF 7



**NOTES**  
**COORDINATES, BEARINGS AND DISTANCES**  
 COORDINATES SHOWN ARE GRID  
 DATUM = NAD 83 1990 ADJUSTMENT  
 ZONE = FLORIDA EAST  
 LINEAR UNIT = US SURVEY FEET  
 COORDINATE SYSTEM 1983 STATE PLANE  
 TRANSVERSE MERCATOR PROJECTION  
 ALL DISTANCES ARE GROUND UNLESS OTHERWISE NOTED  
 SCALE FACTOR = 1.0000270  
 GROUND DISTANCE X SCALE FACTOR = GRID DISTANCE  
 BEARINGS AS SHOWN HEREON ARE GRID DATUM,  
 NAD 83 1990 ADJUSTMENT, FLORIDA EAST ZONE.

**LEGEND / ABBREVIATIONS**  
 C - CENTERLINE  
 Δ - DELTA (CENTRAL ANGLE)  
 AE - ACCESS EASEMENT  
 DE - DRAINAGE EASEMENT  
 L - ARC LENGTH  
 LAE - LIMITED ACCESS EASEMENT  
 LB - LICENSED BUSINESS  
 MTE - MASS TRANSIT EASEMENT  
 MUPD - MULTIPLE USE PLANNED DEVELOPMENT  
 (NR) - NON-RADIAL  
 O.R.B. - OFFICIAL RECORD BOOK  
 PBCUE - PALM BEACH COUNTY UTILITY EASEMENT  
 PNT - POINT OF NON-TANGENCY  
 R - RADIUS  
 SEC. - SECTION  
 UE - UTILITY EASEMENT  
 ■ PRM - DENOTES PERMANENT REFERENCE MONUMENT  
 4" x 4" x 24" CONCRETE MONUMENT STAMPED  
 LB3591 UNLESS OTHERWISE NOTED  
 SIRC ● - DENOTES SET 5/8" IRON ROD WITH CAP  
 STAMPED "C&W LB#3591"  
 (P) - DENOTES VILLAGGIO ISLES PUD REPLAT  
 AS RECORDED PLAT BOOK 117, PAGES 102-109  
 OF THE PUBLIC RECORDS OF PALM BEACH COUNTY, FLORIDA  
 (PA) - DENOTES VILLAGGIO ISLES PARCEL A-1 REPLAT  
 AS RECORDED PLAT BOOK 118, PAGES 181-182  
 OF THE PUBLIC RECORDS OF PALM BEACH COUNTY, FLORIDA  
 (PD) - DENOTES VILLAGGIO ISLES PARCEL D REPLAT  
 AS RECORDED PLAT BOOK 119, PAGES 111-114  
 OF THE PUBLIC RECORDS OF PALM BEACH COUNTY, FLORIDA